

B OOTHVILLE E MMANUEL & R ECTORY FARM T IMES

Keep on keeping on...

Friends,

There's something very exciting, open-ended and perhaps even tantalising about entering a month where we look at 'Prophetic Challenge' as having been one of the priorities of Jesus in his life and ministry and so seek to make it central to our lives as Christians too. It feels like almost anything could happen. I wonder, are we ready? Are we open to the things that God might lead us towards? I'd venture to say that the continued existence of our Group of Churches is something of a prophetic challenge in itself.

We can be a sign of hope and unity to the rest of Northampton. We can and do shine the light of Christ into our communities and I have great hope that the transformation of Northampton will continue to 'come from the east' as we step in to 2018.

We have begun this year prayerfully focused on Jesus and trying to find ways of sharing his life and love with the community around us. We do this because we have the imperative to be bringers of good news and sharers of the perfect love of Jesus which casts out all fear. And we do live in a moment where it seems easy to see most of what happens around us as bad news and to quickly become fearful if we're not careful. This is not Jesus' way. He invites us to trust him, to be faithful, consistent and persistent in having faith and growing to know what it means to follow him.

We've learnt so much already as we've journeyed through our Jesus-Shaped adventure these last few months about how, when Jesus met a person or became involved in a situation, things were never the same again. As we've been thinking about prayer over these last weeks, one of the truly captivating elements of returning to scriptures and stories I've read many times before is the simple and yet stunning realisation that as we pray, God is living and at work in us and through us.

Prayer is no mere empty act. It is our opportunity to grow to know God and his ways more deeply, to open ourselves up so that the home Jesus wants to make in our hearts is a hospitable one for him and to be strengthened to the deepest degree so that we can show his kindness, love and power to everyone we meet.

Put simply, we should pray, alongside reading the Bible regularly because to do so is to spend time with God and to find out how best to live. That way we can say that we are making his priorities ours and that we are doing another of the things Christians are meant to do: challenge unjust structures in society and speak truth to power.

When Jesus is welcomed into Jerusalem by the crowds at the beginning of Matthew 21, I wonder what kind of king those who welcomed him were expecting. It's instructive to me that one of his first acts on entering the city is to go in to the temple and turn out those who had turned its purpose away from prayer and focus away from God.

Our eyes and hearts have to be on Christ. I want to be a person who is like Paul, yearning to know Christ and the power of his resurrection, before everything else. A group of people, a family, community who are united in that desire and pursue it together will have everything it needs to transform a community and change a culture.

As we start this year, you might expect this letter to present you with a rousing vision of where we're going this year. We're going to continue to do things in the community, to get to know our local schools better, to serve clients at Foodbank, to provide a home for the community in Cafe Emm, to meet as many people as we can and tell them about Jesus. We're going to continue to teach one another and learn together about what it is to be a Christian. We're going to be generous with our finances, making

sure that tithing is the base-line from which we work. We're going to hope and pray that people will be saved and healed. All of that will happen this year, I have no doubt. But the vision I feel we are being primarily called to is to be a community of people who know and love Jesus. We're to be people who have confidence in the Lord this year.

I believe that God, more than anything else, desires our hearts. If we will give them to him again, there's no limit to where we might be taken. So I think that our vision is exactly that, the thing that we set our eyes and hearts upon this year is to be Jesus. He lives in our hearts and sends us in the power of his love to be agents of prophetic challenge and change. So, at present, no gimmicks, no new projects to worry people that we're overdoing it or over-stretched. We're going to fix our eyes on Jesus.

You'll know that Phil has been away from work for the last couple of months unwell. We continue to pray for his return to health and return to us. I'm very grateful for the ways that I have been supported in his absence. I'm also grateful for the restraint people have shown in not bombarding me (and I think Phil and Becky too) with questions. It's very much appreciated. As soon as we have news to share, please be assured that we will do.

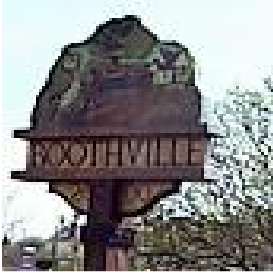
You'll read elsewhere in this edition of BERT about how we're doing financially at present. I want to say that it truly inspires me to see the financial generosity with which you all work out your faith. Thank you. We will continue to do our very best to use the money you give in the best way that we possibly can.

Before we know it, Lent will be upon us. Where does the time go?

Have a great month. Every blessing

Haydon

David Bell's...



Boothville Diary

Congregation eat together.

Every 2 months following the Service we have a Congregational meeting. This was established as part of the growth action plan and concludes with us all sitting down together to enjoy an excellent meal.

As a community Church we enjoy each others company and hospitality. This meal took place on 7th December.



The Bishop comes to Boothville

It was our Carol Service on 17th December and we had a very important visitor, Bishop Donald. The Service was led by Haydon where we witnessed the licensing of his dad, Doug Spenceley as Associate Priest and Angie Kennedy as Licensed Evangelist. All 3 Churches were represented and also in attendance was the Mayor of Northampton. Carols and lessons were enjoyed, in addition to a special sermon from the Bishop.



Julie Goodlad pays a welcome visit

Our Service at the end of the month (31st) saw a welcome return of Julie Goodlad. Peter led the Service and Jean

read a lesson. A truly family affair.

We were given an excellent and interesting presentation of Julie's recent mission to Senegal and details of World Horizons. the charity she works for.



Boothville Choir

The planned Christmas Concert had to be postponed after a deluge of snow. But the rescheduled Concert on 14th January was another sell out evening.

Thanks to Janet and the hard work of the Choir a new programme was produced.

Great singing, wonderful soloists and then, of course, there were the jokes. Can you recognise some familiar faces in the Choir? I am given to understand that over £700 was raised for Spurgions Children's Charity.



Recognises the five priorities that Jesus modelled in his three year ministry. It helps churches explore these priorities in enjoyable and practical ways. It inspires churches to re-shape themselves in response to this in practical ministry. It has a special focus on including children and young people in the Jesus Shaped People adventure and helps churches evaluate their progress and maintain their Jesus Shaped focus.

FEBRUARY 2018 PROGRAMME

Sunday Service	Weekly title	Midweek Meeting
Sunday 04 February	Prophetic Action	House Groups
Sunday 11 February	Social Injustice	Emmanuel
Sunday 18 February	Political Power	House Groups
Sunday 25 February	Recap & Reflection	

Treasurers Report on 2017

2017 has been an interesting and in many ways fruitful year for the Emmanuel Group of Churches.

We started 2017 with a forecast deficit of £12,000.00. Initial results from the Auditor show a surplus at the end of the year of £4,097.00, however we then need to deduct the Tithe Fund at £11,002 which leaves us with a projected deficit for the year of £6,905.00.

Giving in 2017 was 5% over 2016, which is a tremendous achievement by the Group of Churches, Emmanuel, (+7%) Boothville (+10%) and Rectory Farm (-2%) (with regards to RF, weather & Joint Services, contributed to deficit).

For 2017 we were asked to contribute £59,766.00 for our Anglican Parish Share request. We committed to pay £55,029.00, as agreed at Group Council. I am pleased to advise that we managed to pay the full amount as agreed, however only due to a wonderful and generous donation from a Church Member who donated the final monthly payment of £4,585.00.

We had several appeals during 2017, Sports Hall Floor, New Signage for Church and Coffee Shop and Lift Roof Repairs. Once again the response to these appeals has been overwhelming and we have met the costs involved.

2018 is upon us and is looking extremely challenging to say the least. Basically if you isolate the "Restricted Funds", which are Community Care, Youth Worker, Family Worker, the "Free Funds" left is dangerously low and has been highlighted as not acceptable by our auditor. We should keep around £13,000.00 (one months outgoings) of free funds in our account, we are well below that at the moment.

We therefore need to either increase our income or decrease our expenditure quite significantly. If this does not happen the time will come when we will be unable to pay our bills. Currently the Finance Team are actively looking at the situation and hopefully some solution will be found.

Meanwhile I would like to express thanks for the support given by Church Members during 2017 and the assistance given to me by Grant, Linda and indeed the Finance Team who help me with what is a difficult and challenging role.

I will with your consent continue as Treasurer in 2018 and sincerely hope that this time next year I will be able to give a more positive report.

Mike Maddocks

Emmanuel Group of Churches - Treasurer



Women & Wine

(plus chat, food, fun & dessert!)

Thursday 15th Feb



from 7.00pm
at



THE LUMBERTUBS

Talk to Jo (07841 578746) for more info
to say you're coming, to offer a lift
or for help with a lift

Paul Foster's

Community Care Update – February 2018

As this is my first BERT update in 2018, may I wish you a Happy New Year and thank you for your support and prayers in 2017.

It really feels God has been stirring in my heart for the role and the events we have been running. They have been very special and really feel God has been touching the community we are called to serve. First some Christmas highlights, then onto what is happening this year.

Elwes Arms

We were asked if we could step in to run the annual carols on the patio at the Elwes Arms in Billing on Christmas Eve, as it looked like it wouldn't be running for the first time in 16 years. Those who had been before said there could be about 100 people going, so we couldn't let them down. It was a massive privilege to be able to help. People were packed onto the patio, and in the car park, singing along to the carols played by Richard Bryant interspersed with Haydon doing a couple of short talks. The interesting thing was that people came to sing carols as part of their Christmas. As soon as it was over most people left.

Messy Christmas

Storehouse church members joined us and we ran a Messy Christmas special in a vacant shop unit in the shopping centre. The Salvation Army and Sacred Heart church were busy doing other community things but are keen to join us next time. Over the two hours, nearly 100 people came through the door. Taking part in a range of nativity-based crafts, or catching one of the short films that ran continually throughout the morning. This was way beyond any of our expectations and we felt we had been really blessed when the shutters came down.

I would like to pass on my thanks to all those involved; and in particular Weston Favell Centre management who allowed us to use the shop and decorate the window which remained there for the majority of the Christmas period. We even had a visit from their kids club characters!

Boothville carols

We sung our hearts out at the Lumbertubs Pub on 7th December.



There were about 40 people singing alongside Boothville Community Choir. It was a truly special evening, singing about 10 carols in all and helping the Lumbertubs pub customers remember a little about what Christmas is about.

We have been asked back for 2018!

So what is going to happen this year?

Messy Easter

Following the success of Messy Christmas, we hope to be running Messy Easter. Dates and times to be announced. Storehouse church, The Salvation Army and Sacred Heart church are keen to be involved and we are hoping that we will, once again, be able to do something in Weston Favell Centre.

Estates update – Prayer walk

You might recall that there is a lot of social isolation in our estates. I was hoping to start a drop-in at Goldings Community Centre in Goldcrest Court. However, I really believe that God is telling me, through a number of different people and prayer, to wait; to prayer walk the estates; to discover what we are being called to do.

In addition, to pray for people to come forward who would like to be part of the community work and events we are hoping to run. When it is up and running it would be encouraging for people who visit if there were some people – other than me – to welcome them.



Contact me at the office 402150
or email

paul.foster@emmanuelgroup.org.uk



Half term hunger (FISH)

The half term lunches will be running again and we now have a name for them. It is called **F I S H – Fun and Food In School Holidays**.

This time Blackthorn Primary is hosting it instead of the Community Centre. We are running these between 12 & 2 again.

Once again I shall again be looking for cooks, Servers and people to help with setting up and packing away.

Please let me know if you can help with this valuable ministry, enabling young people and their families to receive a hot meal during school holidays.

Monday 12th Feb
Wednesday 4th April
Wednesday 11th April
Wednesday 30th May

Do you know someone who is lonely and isolated, lives in the area and would welcome a visit once a week?

Increasingly on the news there are stories of a straining NHS and over stretched services, together with tales of older people calling 999 for an ambulance because they are lonely. There are people in their homes who only have the TV for company and see nobody from one week to the next.

Is there an older person in your street who you know doesn't have family locally, is not able to get out and about because of an illness or disability, and would welcome a weekly visit from a volunteer?

Did you meet someone at Foodbank that you realised, from a conversation, was really lonely?

Do you know someone who doesn't get out of their house from one week to the next and only has their TV for company?

Is there a person on your street that you think would benefit from someone visiting them once a week?

You can really make a difference to their lives by referring them (with their permission) to the Linking Lives Scheme.

Linking Lives is a free befriending scheme, which links isolated, lonely people to volunteers who visit them in their own homes, once a week. We take referrals from next of kin, neighbours, health care professionals and other agencies. In this time of JSP please take some time to pray and ask God if there is anyone He is putting on your heart that may benefit from the scheme.

Or, if you fancy offering your services to Linking Lives Northampton as a volunteer, please come and have a chat with me if you see me around the Emmanuel Coffee Shop or give me a call on 07816 484851, or email me on linknorthampton@gmail.com.



By Angie Kennedy



Do something amazing and make a difference to someone's life....

It's Good to Volunteer

What is your work-life balance?

Ideally, it should be a four-way effort of family, work, leisure and - very important... volunteering.

That is the belief of Sir Nick Parker, who served as Commander of the Land Forces from 2010 to 2012. He argues that young people, of between 10 and 20 years old especially, will themselves be helped by regular volunteering, as it helps them learn new skills, increases their resilience and self-confidence, and can improve their social mobility and life chances.

Now Sir Nick Parker has been calling on the Government to encourage people of all ages to get used to volunteering, as not only could it help revitalise civil society, it also can help young people to grow and mature, and get into the habit of playing an active, useful role in their communities.



Prayer and Praise

Monday 5th February

7.30pm – 9.30pm

@

Mount Pleasant Baptist Church

Kettering Road NN1 4BS

Please join us for praise and worship and to pray together with Christians from many different churches, for the needs of the people of Northampton.

Refreshments are from 7pm

ALL are welcome.



Food Bank ... needs YOUR help

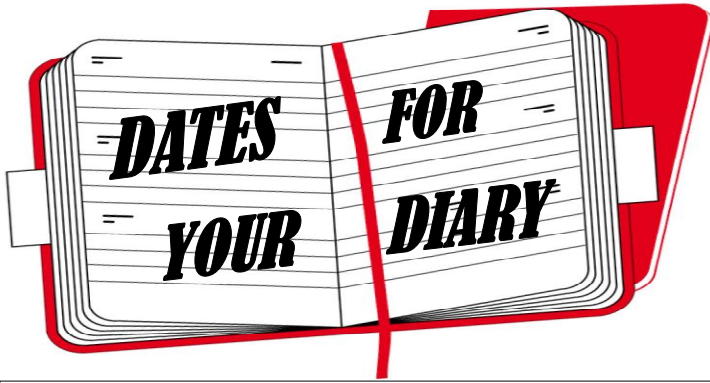
We are greatly blessed in that we receive so many generous donations of food & toiletries etc. every week, that enable us to help many families in difficult times.

But - it all need to be sorted, weighed, dated and stored and we need more help to do this important job.

Are YOU free, able & willing to lend a hand?

The main session for this is every Tuesday from 10am onwards.

If you think you may be able to help, please speak to Linda Withers (office number on back page) or just turn up on a Tuesday. - Thank you



Great Billing Methodist Church

You are invited to

A PRAYER BREAKFAST

8.30 – 9.30 a.m.

Every third Tuesday of the month 8.30am - a quiet, structured time of prayer for our world, our community and ourselves.

9.00am - light breakfast of fruit juice, cereal & toast.

+ Reflective mornings at Great Billing

On the first Tuesday of each month. Enjoy a relaxed time of fellowship and reflection. Refreshments from 10.15am. Meeting 10.30 to 12 noon. More details from Joan Beswick (638687) or Norma Baxter (844316)



You are invited to join Bishop Donald at the Bishop's Bible Day 2018 St Paul for Today

Peterborough Cathedral Sat 24th February
or Northampton High School Saturday 3rd March

It's free – just bring a packed lunch and a Bible;
drinks are provided.

There will be two keynote addresses by Bishop Donald,
lots of workshops to choose from,
worship, fellowship and a bookstall.

To book: sally.crossley@peterborough-diocese.org.uk
01604 887049



GROUP HOLIDAY 2018

TO NORTHUMBERLAND

June 4th to 11th 2018

Eight days staying at The Ramada Encore Hotel Gateshead

Cost £499.99 Travel insurance £25.00pp.

Day trips are all included: A boat trip from Seahouses to see the seals and puffins - Bamburgh castle - Visit the red squirrels at Howick Gardens - Heatherslaw light railway - National Trust Cragside house and a visit to Lindisfarne (Holy Island).

20018 DAY TRIPS

Boundary Mills near Grantham and Easton Walled Gardens on Wednesday May 9th 2018 cost £13.50. -

a shopping outlet where you can find everything! There will be time to shop and get some lunch before we leave to visit Easton Walled Gardens during the afternoon.

Kentwell Hall, gardens and rare animal farm.

Saturday July 7th 2018 cost £26.00 Adults £25.50 OAPs and £20 50 for children

Cotswold wildlife park and gardens Saturday

August 11th cost £24.00 Adults £20.50 OAPs and Children £19.00

Sheringham on Saturday June 23rd 2018 cost £15.00.

Lincoln and Lincoln Cathedral on Saturday

September 8th cost £20.50

Southend on Sea on Saturday August 25th

cost £15.00.

All these wonderful trips are available to you all
- and you can spread the cost over the next few months!

Just book with Kathy Norris on Tuesdays
at Emmanuel coffee shop Weston Favell Centre

or phone her on Northampton 494057 or 07923017619

You can book a place with a deposit of £5.00.

SCB Automotive Quality Work @ Competitive Prices

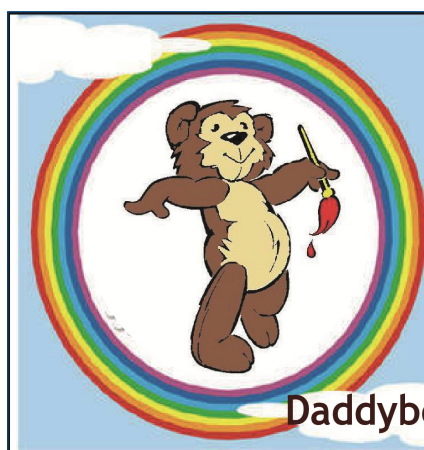
Mobile Car and Motorcycle Repair
Any Make Any Model

MOTS Servicing

Full Car Diagnostics
From **£50**

- Petrol/Diesel
- Cars/Vans/Motorcycles
- Brakes
- Engines
- Suspension
- Clutches
- Camshafts
- Window Tinting
- Bodywork Repair

Call Stuart on 07717378640
or visit
www.scb-automotive.co.uk



Daddybear Face Painting

Stephen Scott

01604 402253

07591 693843

daddybear1973@yahoo.com**REGULAR GIVING**

If you give regularly to the work of The Emmanuel Group, please consider giving via the envelope scheme and, if you pay income tax... 'Gift-aid' it so that we can claim tax back, maximising your gift.

For further information, enquire at Emmanuel church office (next door to our coffee shop) or ask a steward at one of our services.

John Jeffreys Electrical

01604 962055 T / 07903 534833 M
@ john@johnjeffreys-electrical.co.uk
www.johnjeffreys-electrical.co.uk

Electrical Safety Register incorporating ELEC SA NICEIC ECA Certification Ltd

Approved Electrician
Wootton, Northampton

DEADLINE

for items for the

MARCH**Edition**

of

B.E.R.T**Friday****16th February****2017**

Please send your articles,

testimonies, comments,
funny stories, family news,
favourite recipes,
local issues, etc. to...

liz@lizzywhizz.biz

or leave items for BERT
at the church office.

SEE BERT ONLINE**And in FULL COLOUR****at our website:****www.emmanuelgroup.org.uk****Assisted Photocopying Service****Black & White Copies**

A4 Single Sided	10p
A4 Double Sided	15p
A3 Single Sided	20p
A3 Double Sided	30p

**Colour Copies**

A4 Single Sided	50p
A4 Double Sided	80p
A3 Single Sided	1.00
A3 Double Sided	1.50

Assisted Faxing Service**Sending:**

UK	First Page	1.70
(& N. Ireland)	Subsequent	0.50
Europe	First Page	2.00
(& N. America)	Subsequent	1.00
Rest of the World	First Page	2.50
	Subsequent	1.25
Receiving:	First Page	0.75
	Subsequent	0.05

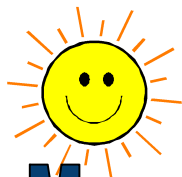


+

Laminating, Scans*
Printing from emails*

*Standard costs per copy
+ Admin Fee
£2.50 per 15 minutes.

Please note -
there is no typing service

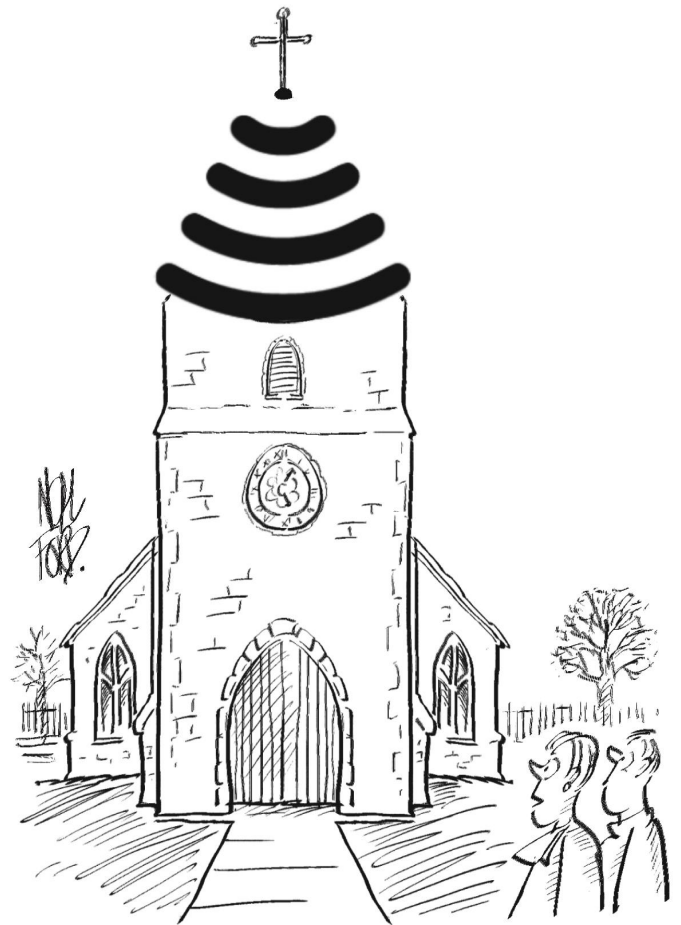


Morning & Evening Prayer at Emmanuel

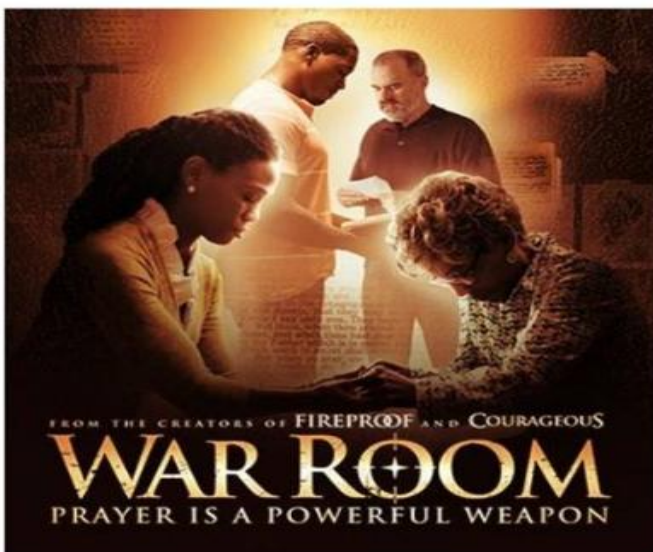
Meeting together Monday to Friday at 9am and 7pm. It is open to everyone, so please do come.

We want to commit to make prayer central to our lives together. To pray for our Church, our community, the places we live, the people we're called to love and serve, the wider world, for those who lead us locally, nationally and internationally and for those who struggle in whatever way, and wherever God is needed.

Day	Morning Prayer 9AM	Evening Prayer 7PM
Monday	Family Room	Chapel
Tuesday	Chapel	Family Room
Wednesday	Chapel	Coffee Shop
Thursday	Chapel	Chapel
Friday	Chapel	TBC



"Looks like they've introduced contactless payments for their collections."



Sunday 28th January
7pm -9pm

**Emmanuel Church
Weston Favell**

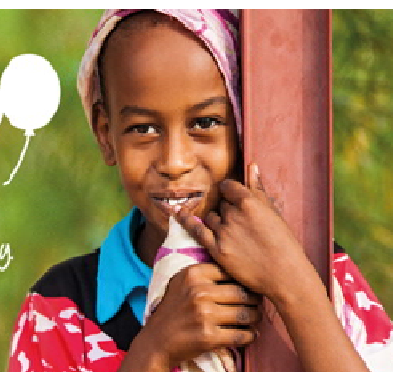
Youth fundraising event for
Soul Survivor and SPREE -
Summer 2018

Refreshments available for a donation!

There is no better way to finish off this months JESUS Shaped People, than to come together and watch this powerful movie. The young people of the Emmanuel Group will be hosting this event and serving refreshments, please come and support them.

BIRTHDAY SCHEME

*Do something wonderful on your birthday.
Share the gift of life.*



Many Thanks

to all of those who have given contributions during 2017 to the

Baptist Birthday Scheme.

We were able to send a total of £258 which is great. For anyone who does not know about it the picture here and the extract following from the Baptist Union

website explains: "By giving a gift to the BMS Birthday Scheme every year on your birthday, you're doing something amazing – you're sharing the gift of life. Every gift given to the Birthday Scheme supports our life-transforming health work. Your birthday can help medics in Chad keep vulnerable mothers and babies safe in childbirth. It can support children with disabilities in Thailand, providing them with a loving home in a society which often rejects them. And it can help struggling people in Uganda access speech therapy, giving them the opportunity to communicate with the world around them.

Every year, Birthday Scheme members donate over £300,000! These gifts are having a huge impact, saving and transforming lives in countries across the world."

If you would like to know anymore please contact me on 01604 647611 or gillehill@aol.com



m&m Prayer



The Oxford Dictionary definition of prayer is "A solemn request for help or expression of thanks addressed to God"

Over January the JSP material has focused on material to discuss prayer as a topic and to set aside time to pray.

At Sunday School, the group task was to write down, what we did on a daily basis and if there any free times to talk to God.

We looked at how long activities took, from eating, being at school, homework, brushing teeth, PC/games/TV looking at phone messages etc. They all squeeze life and time for prayer out of our daily activities.

I personally had to think really long and hard, about how much time I gave to talking to God, and to thank Him for all He has done, for me/ us as a family and the wider church family.

So the M&M prayer prompt sheet is there to help anyone specifically pray for people and situations linked to the colour of the chocolate coating along with a space to make a note of a bible verse that comes to mind.

M&M PRAYER PROMPT SHEET February 2018

COLOUR	WHAT TO PRAY FOR?	Name/notes Bible verses
GREEN	Thank God for a gift you have and for a gift you would like God to help you improve.	
BLUE	Pray for a friend or neighbour (s)	
RED	Pray for a teacher/leader Home educator/Line manager etc.	
YELLOW	Pray for one Country (other than the UK)	
ORANGE	Pray for someone who is ill or recovering	
PURPLE	Pray for the leaders in the Church	
	Pray for what you could offer to do for the church	

Prayer is infused in the Old Testament and the New Testament, and you do not have to eat sweets to remind you to pray.

So lets strengthen our prayer lives, and watch God work His wonders and miracles in our lives

Supplied by Fiona Potter (Rectory Farm CC)



YOUTH

Jamout -

Is a Christian youth group for
Secondary School children.
It's held on the top deck of Emmanuel
7-9pm on Fridays.
We have testimonies, film nights,
munch (*food and fellowship*)
group discussions, games nights
and social events.



'R-

zone'

is a free youth
group for children aged 8 - 13

We are open from 5pm until 6pm
on Fridays at Rectory Farm
Community Centre.

See our webpage @

www.rfnorthampton.org.uk/r-zone

want to know more?..

- call Mell on 402150 (church office)



Junior Church for 4 - 18 years

Creche for under 4s

on the 1st and 3rd Sunday of the month

@ Emmanuel

'Bible study'

is a fortnightly session
at Mell's house for those aged
14+.

(Term time only)



**Emmanuel Church
Weston Favell Centre**

A chance for everyone to have
fun, make things, explore
faith & enjoy a meal

Although there is no specific charge,
we look for suggested donation of £2 adult,
£1 child towards the meal,

**1ST SATURDAY
OF THE MONTH**

10:30 - 12:30

**Why not give
it a try**

THERE'S LOTS TO DO EVERY WEEK IN THE EMMANUEL GROUP OF CHURCHES

Monday	Prayer meeting	Emmanuel	7.30 - 9.00pm
Wednesday	Family tots	Emmanuel	9.45 - 11.30am
	Family tots (session 2)	Emmanuel	12.00 - 1.30pm
	Friendship circle	Emmanuel (fortnightly)	1.45pm
Friday	R-Zone Youth club 8 - 13 years	R.F Community Centre	5 - 6.00pm (term time only)
	Jam out Christian Youth Group	Emmanuel	7 - 9.00pm (term time only)

Emmanuel House Groups meet at various times & venues during the week

(see below)

- for more info contact Olu Bamgboye (01604) 670245

COME & PRAY
WEDNESDAY
28th FEBRUARY
7AM - 8AM

JOINT
PRAYER MEETING
WITH
STOREHOUSE
CHURCH

AND THE
SALVATION

ARMY

PENISTONE ROAD

AT

EMMANUEL
COFFEE SHOP

PRAYER FOR
NORTHAMPTON
EAST
AND FOR OUR
CHURCHES.

BELIEVE IT OR NOT
THE HOUR FLIES BY!!!

WITH COFFEE AND DANISH
OF COURSE!!

Book the last
Wednesday
of EVERY month
in your diaries

Emmanuel House Groups

meet at various times & venues during the week

Area	Day & Time	Leader
Boothville	Tuesday – 7.30pm	Rachel
Goldenash	Tuesday - 1 - 2.30pm	Tracy/Vicky
Goldings	Wednesday – 7.30pm	Olu
Overstone Lodge	Wednesday - 7.30pm	Linda/Precious
Southfields	Wednesday – 7.30pm	Liz/Jasmyne
Great Billing	Thursday – 7.30pm	Gill

Speak to Olu (house group co-ordinator) for further info: 01604 670245
or any of the house group leaders.

Family Tots

2 sessions on Wednesdays
9.45am - 11.30am or 12 - 1.30pm

at

Emmanuel Church

Weston Favell Shopping Centre

Top floor Coffee Shop entrance

£2.00 includes snack and drink
for the children

+ tea/coffee for parent/carer
(60p for additional adults)

Any profit goes towards
new equipment & extra activities

Every **Monday Evening**

7.45-9.00pm

PRAYER

in the chapel
at

Emmanuel
Church

Open to All

Please come and join
us, you will be most
welcome

THE FRIENDSHIP CIRCLE

LAUGHTER	ACTIVITIES	SHARE	COFFEE	WEDNESDAYS
	FUN	Meet New Friends		
	VISITING SPEAKERS	GAMES	CHATTER	
	TEA	FRIENDSHIP	GIGGLES	

ALTERNATE WEDNESDAYS

IN THE COFFEE SHOP AT EMMANUEL WESTON FAVELL CENTRE
FOR MORE INFO CONTACT: KATHY NORRIS or JEAN MARKS

Emmanuel is a
learning disability
friendly church
everyone welcome



The Ministry Team

Revd Phil Snelson 401540 philip.snelson@methodist.org.uk
 Revd Haydon Spenceley 244391 haydon.spenceley@emmanuelgroup.org.uk
 Revd Douglas Spenceley 402150

Emmanuel Group Office - 01604 402150

Administrator Linda Withers Linda.withers@emmanuelgroup.org.uk
 Community Care co-ordinator Paul Foster 402150 (church office)
 Coffee Shop Manager Vacancy 402150 (church office)
 Safeguarding co-ordinator Kristin Hatherly 402150

B.E.R.T Editor Liz Bateman liz@lizzywhizz.biz

Weekly News-sheets

Emmanuel Jasmyne Price 07747 052 679 jasmyne.price@gmail.com
 Boothville Mary Langley 01604 644688 mary.langley123@btinternet.com

EMMANUEL GROUP of CHURCHES BILLING BROOK ROAD
 NORTHAMPTON NN3 8JR

RECTORY FARM COMMUNITY CHURCH

Rectory Farm Primary School
 Olden Road (opposite the local shop)
Sunday service at 10.30 am



BOOTHVILLE COMMUNITY CHURCH

Boothville Community Hall
 Booth Lane North
 (access via the lane by the hairdressers)
Sunday service at 10.30 am

EMMANUEL CHURCH

Weston Favell Centre,
 Billing Brook Road
Sunday service at 10.30 am
Weds Communion at 1.30pm (30 min)
Group Office - Mon - Fri 10 - 2 pm
Café Em (coffee shop) - Mon - Fri 10am - 2

Services in February 2018

Date	Emmanuel 10:30am	Boothville 10:30am	Rectory Farm 10:30am	YOUTH GROUPS
Saturday 3rd	 In Emmanuel Sports Hall (coffee shop entrance) 10.30 -12.30pm - see page 10 for details			
Sunday 4th Jesus Shaped People 13	Communion + BLAST Chris Pearson + David Bell	Morning Worship Maureen Luke	All Age Covenant Service Haydon Spenceley + Obi	Rectory Farm Praise & Prayer <u>Emmanuel</u> Own Group
Sunday 11th Jesus Shaped People 14	iPraise Youth Group + James Fearnley	Communion Doug Spenceley	Morning Worship + Junior church Cathy Rogers	Rectory Farm Own Group <u>Emmanuel</u> ipraise
14TH FEBRUARY - ASH WEDNESDAY COMMUNION - 7PM AT EMMANUEL				
Sunday 18th Jesus Shaped People 15	Communion + BLAST Haydon Spenceley Nick Bewley - Tippler + Paul Foster Prospects Group - ground floor	Morning Worship David Bell	Praise & Pray Kristin Hatherly	Rectory Farm & Emmanuel at McDonalds
Sunday 25th Jesus Shaped People Re-cap	Café church Doug Spenceley + Lista Nickason	Communion Chris Pearson	Communion + Junior church Nick Bewley - Tippler	EVENING YOUTH SERVICE] 7-9pm @ Emmanuel

And - COMMUNION EVERY WEDNESDAY LUNCHTIME at 1.30pm
 a simple 30 minute service in the chapel @ Emmanuel