

B E E R T

BOOTHVILLE EMMANUEL & RECTORY FARM TIMES



Today we are living in unsettled and chaotic times, as a nation and globally too. You might say we are bouncing about on choppy seas and perhaps overwhelming waves. And then there is whatever we might be navigating personally, our friend's struggles, family and church community issues and others.

I have been reflecting that to handle such seas well, we need to be abiding in God and to be anchored in him, so that when we reach the stormy seas and perhaps linger there, we are sturdier and surer. We will be surer of God's call and equipping to follow him wherever we are, and amidst the circumstances we find ourselves, surer of his constant compassionate presence with us, sure that he is in control, over and above all, with power over every storm, and surer of the hope that God's promises are steady, providing an anchor for the soul.

MSG Hebrews 6:¹⁸⁻²⁰ *We who have run for our very lives to God have every reason to grab the promised hope with both hands and never let go. It's an unbreakable spiritual lifeline, reaching past all appearances right to the very presence of God where Jesus, running on ahead of us, has taken up his permanent post as high priest for us,*

If we seek to abide in God, we will not despair and panic, well we might for a moment, but we will be more resilient, grounded and anchored in him. We will know his peace. Knowing God's peace and refuge amidst our everyday is so important and this comes from knowing our hope in Jesus, spending time with

him, becoming aware of his presence and attentive to his voice.

John 16:33 TPT Everything I've taught you is so that the peace which is in Me will be in you and will give you great confidence as you rest in Me. For in this unbelieving world, you will experience trouble and sorrows, but you must be courageous [cheer up... why?], for I have conquered the world!"

Indeed, God wants us to know his peace amidst our lives.

Romans 15:13, I pray that God, the source of hope, will fill you completely with joy and peace because you trust in Him. Then you will overflow with confident hope through the power of the Holy Spirit.

There is a very old prayer—known as the “fisherman's prayer.”

I think that this prayer captures something of what the world feels like today: big and wide, not particularly safe, friendly, or predictable, and our ability to cope with it all feels flimsy, like a small wooden boat colliding with the stormy waves of the ocean. Throughout it though, the poet weaves God's hope and sense of safety.

I pray we would truly and deeply know God's hope, security and peace in whichever circumstances we find ourselves.

Rachael Warnock

(see fisherman's poem overleaf)

(continued from the front page)

The Breton Fisherman's Prayer

"Thy sea, O God, so great
My boat so small.
It cannot be that any happy fate
Will me befall
Save as Thy goodness opens paths for me
Through the consuming vastness of the sea.

Thy winds, O God, so strong,
So slight my sail.
How could I curb and bit them on the long
And saltry trail,

Unless Thy love were mightier than the wrath
Of all the tempests that beset my path?
Thy world, O God, so fierce,
And I so frail.

Yet, though its arrows threaten oft to pierce
My fragile mail,
Cities of refuge rise where dangers cease,
Sweet silences abound, and all is peace"
(Winfred Ernest Garrison).

IT'S SOMEBODY'S BIRTHDAY

by Ian White

*Crackers and turkeys and pudding and cream,
Toys in the window that I've never seen.
This is the Christmas that everyone sees,
But Christmas means more to me.*

Chorus

*It's somebody's birthday I won't forget,
As I open the things that I get.
I'll remember the inn and the stable so bare,
And Jesus who once lay there.*

~

*Everyone's out shopping late every night,
For candles and presents and Christmas tree lights
This is the Christmas that everyone sees,
But Christmas means more to me.*

~

*Christmas morning, the start of the day,
There's presents to open and new games to play.
This is the Christmas that everyone sees,
But Christmas means more to me.*

(A song used at Boothville on New Year's Eve)

God is Love

Lent begins on the 14th February this year. That date might sound familiar to the more romantic among us; it is of course (Saint) Valentine's Day and it might seem hard to hold together the two themes of human love and readying ourselves for a season of penitential preparation.

Will it be hearts or ashes?

At one level, of course, the contradictions are less obvious. St John reminds us that: "God is love and those who live in love, live in God and God lives in them". (1 John 16) He also says: "God so loved the world, that he gave his only Son so that everyone who believes in him may not perish but may have eternal life" (John 3:16)

Love is the meaning of it all – God creates the world in love, and in his love for the human race sends his Son to redeem fallen creation. Jesus comes to share our life, to live with us and die like us and for us but most importantly to rise again, so that we might know that love has the final word.

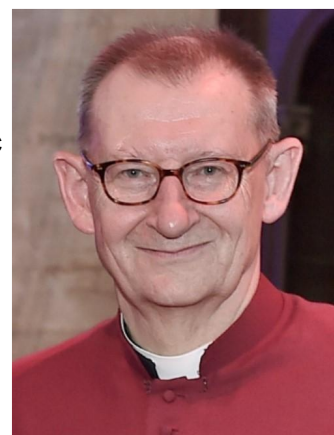
And Jesus said that he came that we might have life, life in all abundance, so I take all this to mean that the joy of relationships is also very much his will. Romantic love can, perhaps, be an elusive quality; passion passes; but God's love, as St Paul puts it in his great love poem in 1 Corinthians 13, that love never ends.

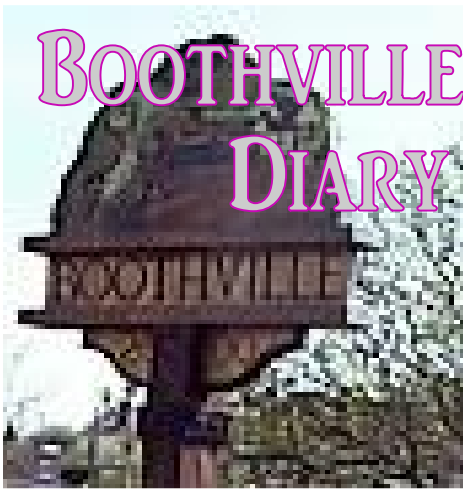
And it is God's love and grace that our new Bishop will encourage us to share through our churches and in our communities in the months and years to come. Bishop Debbie's much anticipated arrival is something in which we, at the Cathedral, have a very special part to play and it's all systems go as we prepare for the 3rd March when we look forward welcoming people, parishes, institutions and civic life from across the Diocese and beyond for her service of Welcome and Installation.



Chris Dalliston

Dean of Peterborough





Yvonne led our Carol Service this year.

This consisted of readings and carols and often thought provoking monologues.

The most moving part of the service was when we each held a lighted candle. All the lights in the hall were switched off as we focussed on the candle and Jesus, The Light of the World. The service was followed by tea, coffee or mulled wine accompanied by warm mince pies.



Once again the Boothville craft and coffee morning groups did a wonderful job of decorating the hall for Christmas.

Many of the hanging decorations and those on the windowsills were made up of woolen pompoms. There were hundreds of them. A member of our congregation who was involved with this said she was seeing pompoms in her sleep!



As Christmas Eve was a Sunday we had a morning service instead of one at mid night. Even with quite a few regulars away this was a large congregation. Many of our congregation are reluctant to come out at night for various reasons so this worked so well for them. On New Year's Eve Stewart introduced the congregation to a carol/song that was new to them but it may still be a favourite in Primary schools 'It's Somebody's Birthday' by Ian White. (see opposite page)

The first of the Christmas events was the Boothville Choir Concert.



This year the money raised went to the Little Princess Trust, a charity that provides real hair wigs, free of charge, to children and young people who have lost their hair through cancer. A magnificent £ 786.39 was raised.



In the last edition of Bert you were introduced to the Boothville Monday afternoon house group. Here is our Wednesday house group.

The group who meet at John and Elizabeth Weaver's house usually meet in the evening but have changed to 3.30 in the afternoon for the winter. The four other regular members are Peter and Jean Goodlad and Roy and Trisha Harland. Julie Goodlad joins them when she is visiting. The group have all been Christians for many years and follow the designated Emmanuel themes. They watch the videos at home prior to the sessions in readiness for sharing their thoughts for discussion.

Doreen Jeffs passed away just after Christmas. She attended Boothville for a number of years and worked in the coffee shop during this time making many of the cakes. Her wake will take place at Boothville Hall

Café Emm are holding a Spring Fayre

on

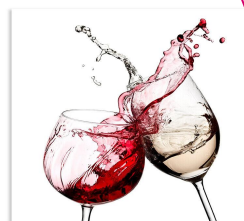
Saturday April 13th in the coffee shop

with various stalls, children's books and toys,
cakes, bottle tombola, gift tombola, name the
lion, guess the weight of cake, puzzles,
bric a brac and lots more.

If you would like to run a stall or help in any way
please let me know.

If you can't help, please come along and enjoy
yourself whilst raising money for the renovations
of the Café Emm toilets.

Thank you.



Women & Wine

We meet together monthly, for our regular 'Women & Wine' gathering...

(called *women and wine* but much more about food!)

All women welcome. It's a great time to catch up, have a good chat, enjoy fellowship, fun and a nice meal with no washing up!



Women & Wine usually meets monthly on a Wednesday from 7pm at the Quays. You can get details of upcoming dates and join our WhatsApp group by contacting Revd Rachael Warnock.

(Also a brief mention of Men's Pie & pint)

"Pie and Pint" meet at the Lumbertubs Pub on the 1st Thursday of every month from 7:30pm.

All men welcome.

Contact for more information about this group is Paul Foster.



**Emmanuel Church Office
Weston Favell Centre**

**Baby Basics Northampton
donation drop off point**

We can accept donations

10am-1pm on Mondays
and 10am-2pm Tues - Fri.

The church office is on the Upper Shopping Mall,
under the library and through the
automatic double doors

How to donate to charity without it costing anything!

If you are buying your Christmas presents (or anything else) online, many companies including big names such as Amazon, Currys, Argos, Boots, Tesco, John Lewis, Asos, Very, B&Q, Dunelm and many more, will donate a percentage of the online purchase price to a charity of your choice.

Obviously we would like your choice of charity to be the Emmanuel Group of Churches, Registered Charity No. 1140504, but the choice is yours.

To get the donation all you need to do is register at <https://www.easyfundraising.org.uk/> and go through this website each time you buy online. You can add an extension to your browser if you wish so that when you search for an item online you get the option to go through the easyfundraising website if the company you are buying from is willing to give a donation.

Whoever you choose to get donations for, it is a way of getting large companies to donate and support charities that you are interested in, without any additional cost to you.

Kevin Potter

Ministry to Tourists in Switzerland

In our last edition Precious wrote of her impressions following a first visit to the Alpine resort of Wengen last autumn and her sharing in the work of the chaplaincy to the English Church there. This month I'm reflecting a little more upon the work itself, compared with ministry here. Jo and I have been undertaking these chaplaincies since 2003, usually about two summers out of every three, but we have never attempted the winter season, which is very busy with the winter sports. We have not always served in Wengen. Sometimes we have been in a very similar situation in Zermatt in the south of the country, right on the Italian border and close to the mighty Matterhorn, and the first we ever did was in the much larger resort of Interlaken.

St. Bernard's Church in Wengen (known locally as 'the English Church') is owned and run by the Intercontinental Church Society, an Anglican mission agency that exists to provide English-speaking ministry around the world. When we join the chaplaincy team I come under the authority of the Anglican Diocese in Europe, which means applying for official 'permission to officiate', and yet another DBS check and making sure that safeguarding training is up to date.

Although ICS is an Anglican agency, its focus is very much on providing ministry for all English speakers, regardless of denominational allegiance. That very much affects the style of services, and in that way it is actually quite similar to the way we worship in the Emmanuel Group. On the other hand, as far as Sunday services are concerned, is that there is very little regular local congregation.

Actually there are just two local regular church members in Wengen, one of whom is a wonderful lady who acts unofficially as a churchwarden. She is English (in fact she spent part of her childhood in Northampton), but married to a Swiss who, until he retired, was the head chef in one of the local hotels there.

All this means that when preparing for a service the chaplain really has no clue how many will be in the congregation, or who they will be; whether there will be any children present (there are not often any), although we always have something prepared and ready for them. You also have no idea in advance as to where visitors will come from. They almost certainly won't all be English. It's very common to greet people from U.S.A., South Africa, Australia, New Zealand, and so on. There are also often people who, although English speakers, may not be English first language speakers; for example, there are often people from the Netherlands present.

The visiting chaplain is expected to hold services both morning and evening each Sunday, plus an informal gathering on Thursday afternoons. This latter can take whatever form the chaplain chooses and over the years we have tried a number of different styles. I guess the most successful one of these we have led was in 2022 when we were there for the late Queen's platinum jubilee. I had purchased a DVD of



the film of her coronation back in 1953 and we showed that on the relevant Thursday and handed out glasses of prosecco. We had our biggest Thursday attendance ever!

There's much more to a chaplaincy than running services and social events though. We are not only there for the tourists, but for all English speakers. Principally that means we try to make contact with English-speaking hotel staff, who are often unable to attend services because they are working on Sundays and also reps. from tour companies who look after visitors who come on package holidays.

We are also expected to be a presence in the resort -to be around and ready to meet people, listening out for English voices, engaging in conversation and inviting people to our services and other events. We nurture a relationship with the staff at the Tourist Information office and we visit hotels regularly, making sure that our publicity materials are being displayed, and fostering good relationships with the hoteliers. And we do all that, not only within Wengen itself, but also in the neighbouring resort of Lauterbrunnen.

We are also there to help in times of crisis. Sometimes there are climbing accidents, and in the winter, of course, skiing accidents. I once went to visit someone in Interlaken hospital following a nasty climbing tumble, but undoubtedly the most serious incident of this kind I have dealt with was some years ago now when ten-year-old boy was tragically lost in a raging waterfall. What a sad privilege it was to minister to that grieving family who had travelled all the way from U.S.A. I have also conducted wedding blessings, renewals of wedding vows, hosted concerts in the church building, and once, a funeral.

Overall, a Swiss chaplaincy with ICS is a combination of work and relaxation and yes, there is a holiday element, although you're never totally off duty. The balance between work and holiday varies enormously, depending entirely upon what happens to come through the door while you're there. You never quite know what will happen next. This year we are not planning to apply for a slot. We generally find that we need a break from time to time, but we hope we shall be back in harness there again in 2025. Thank you so much for all your prayers and support in this valuable ministry.

Chris Pearson



At Emmanuel Church Ground Floor

FOODBANK IS OPEN ON

Wednesday

10.00 -13.00pm

Friday

10.00 - 13.00pm

**Please take any donations
of food to Tesco at
Weston Favell or
Emmanuel Church Office**

**The church office is open
Monday - Friday 10.00 -14.00**

**If you take your food
donation to Tesco they will
add another 20%**



We understand that the rising cost of living is impacting on everyone.
Foodbank is extremely grateful to those who continue to donate, enabling us to continue to feed those in need.

Be assured that to maximise resources we are cutting costs and promoting the need for donations to Foodbank wherever we can.

If you have already donated food or given financially to foodbank, or volunteered to help,

We thank you for your support

If you have some time to spare could you offer a few hours to help at foodbank? We are looking for packers, runners, stockroom helpers and people with computer skills.
Plus drivers to pick up donations from local supermarkets.

If you are able to offer us some time or would like to know more, pop into foodbank, or email:

info@westonfavellcentre.foodbank.org.uk

07467 074 296

Note: this phone is only monitored on

Mon 9 -12.30, Tues 9 - 3pm, Weds & Fri 9 - 2pm

Outside these times you may leave a message

If you prefer to make a financial donation instead of food this can be done via bank transfer to:

Emmanuel Group of Churches

Sort Code - 60-15-55

Bank Account Number - 73955787

Or you can download a standing order mandate from the Emmanuel Church/foodbank website:

www.emmgrou.org.uk

Or via the Weston Favell Centre foodbank page and follow the local giving link:

<https://locagiving.org/charity/weston-favellcentrefoodbank>

FOODBANK PLUS++++

Our Partner services

available on Foodbank days

Melanie Jones – Community Law Services

Anna Thorpe – Northampton Partnership Homes

Yvonne Desroches - Pioneer Curate

Rachael Warnock - Baptist Minister

Foodbank Staff Team

Food Bank Manager – Denise Kennedy

Food Bank Project Manager – Nish Sadikot

Volunteer Training & Development Manager – Sonya Naik

Fundraiser – Julie Parsons

Warehouse Managers – Matthew Kinton & Selina Smith (Job share)

Administrator – Carla Smith

Ukrainian Hub - – Hanna Pecherska

**To all of our
wonderful volunteers
Thank you
for all you do**

John Jeffreys
 **Electrical**

☎ 07903 534 833
 @ john@johnjeffreyslectrical.co.uk
 🌐 www.johnjeffreyslectrical.co.uk

Approved Electrician
 Wootton, Northampton



**Laminating, Scans,
 Printing from Emails,
 Standard costs per copy
 + Admin Fee
 £2.50 per 15 minutes**

Photocopying

Black & White Copies

A4 Single sided	0.10
A4 Double sided	0.15
A3 Single sided	0.20
A3 Double sided	0.30

Colour Copies

A4 Single sided	0.50
A4 Double sided	0.80
A3 Single sided	1.00
A3 Double sided	1.50

DEADLINE

for items for the

FEBRUARY

and

MARCH

EDITION

of

B.E.R.T

FRIDAY

22nd

MARCH

**Please send
 articles and
 any other
 items for
 BERT to..**

liz@lizzywhiz.biz

SCB Quality Work. @ Competitive Prices

Automotive

Mobile Car and Motorcycle Repair
 Any Make Any Model

MOTS | Servicing

**Full Car
 Diagnostics**

From **£50**

- Petrol/Diesel
- Cars/Vans/Motorcycles
- Brakes
- Engines
- Suspension
- Clutches
- Camshafts
- Window Tinting
- Bodywork Repair

Call Stuart on 07717378640
 or visit
www.scb-automotive.co.uk

See **BERT** in **full colour**

on our Website

emmanuelgroup.org.uk

+ lots of other information about our
 group of churches

REGULAR GIVING

*If you give regularly to the work of The Emmanuel Group,
 please consider giving via the envelope scheme and,
 if you pay income tax... 'Gift-aid' it so that we can
 claim tax back, maximising your gift.*

*For further information, enquire at Emmanuel church office
 (next door to our coffee shop)
 or ask a steward at one of our services.*

Emmanuel Group

Memory Café

Do you or anyone you know suffer from Memory Loss, or Dementia?

Come and visit our Memory Café

Supporting people and their Carers, living with Dementia or memory loss

Meet up and chat to others who understand what you are going through in a safe friendly environment.

Every Monday 1.30—3.00pm at Café Emm Weston Favell Shopping Centre Northampton NN3 8JR

**email: anna.austin@cafeemm.onmicrosoft.com
tel: 01604 402150 or 07492 306102**



Registered Charity No. 1119535



Registered Charity No. 1140504



Amazing Opportunities to serve our local school communities.

Rachael and I have for some time been involved in serving our local Schools, helping young people and staff explore the Christian faith. This has been delivered in diverse ways, taking the shape of leading assemblies, prayer spaces, exploring the Celebration festivals and looking at other themes, such as forgiveness, death, and new life. I am pleased to say that during this time we have also been investing in building an excellent schools' team to enable us to sustain this work. Both Rachael and I would like to say thank you to those who have accompanied us into schools as part of the team. Please continue to pray for the work of all our teachers, schools and their communities as we are invited to share the journey with them. May God continue to Bless our Schools.

Singing for the Soul

Supporting people and their carers living with Dementia, Memory loss, Poor Mental Health, Disabilities or anyone who enjoys music and wants to meet new people.

Music has an amazing effect on our mind, souls and general well being. Come and join in the fun: Every Tuesday 1.30 - 2.30pm at Café Emm, Weston Favell Shopping Centre, Northampton NN3 8JR

email: anna.austin@cafeemm.onmicrosoft.com



Registered Charity No. 1119535



Registered Charity No. 1140504

Ukrainian hub

We are here to help

Calling all Ukrainian families and sponsors...

Come along to the Emmanuel Church at Weston Favell Community Support Hub!

- * Meetings with West Northamptonshire Council, resettlement team representatives
 - * Information from local organisations including advice/guidance on Home for Ukraine scheme, sponsorship and family visas.
 - * Help with school places, GP registration, social benefits
 - * Art and Craft sessions for children
 - * Translation is available
- We provide refreshments and drinks to all guests**

Friendly and welcome environment!

- * Delicious Ukrainian food
- * Board games, enjoyable activities and quizzes for kids and adults
- * Creative workshops and art therapy

No need to book, no payment needed.

Meets on Fridays 3—6pm

**Emmanuel Church
49 Weston Favell Centre Northampton NN3 8JR**

**For more information please contact : Hanna on: 07467589519
or Natalia by :Natalia.antipina@westnorthants.gov.uk**

Community Projects



Cafe Emm

Our Family Tots groups are warm and friendly with lots of activities and support.

We call it family tots because it is open to Mums, Dads, Grandparents, Aunties, Uncles or any other carers to come with pre-school children.

You can find us at Emmanuel Church every Wednesday during term time from 10am-11am



Emmanuel Coffee Shop a.k.a, Café Emm, is part of the Co-op Local Community Fund.

To find out more about our project and choose us as your cause visit: membership.coop.co.uk/causes/70035 then swipe your card whenever you shop.

Using the app on your phone is easy and it will remember your cause.

This applies to all Co-op stores with the blue logo (NOT GREEN!) anywhere in the country. In Northampton it's these locations: *Bushland Road, Semilong, Bellinge, Birchfield Road, Upton Place, Olden Road, Old Duston, Barry Road, Pineham, Wootton Fields*



A HOME FOR THE COMMUNITY
Café Emm

Raising money for free food for people in need struggling with the cost of



House groups are key for pastoral support, fellowship, mission and discipleship. We would love for everyone to be involved. Why not consider joining a house group today? If you are interested, contact a house group leader or Rachael for more information.

Leader

Gill Hill:

Mary Langley:

Precious Luke:

John Weaver:

Meriel Mears:

Rachel Tighe

Liz Bateman

Day & Time

Friday Afternoon

2pm on Monday wkly

Wednesday 7.30pm

Wednesday 3.30PM

Thursday 1:30pm

Tuesday 7:30

Wednesday 7:30pm

Location

Emmanuel Church

Dell Crescent, Overstone Lodge

Ashley Way, Westone

Lindisfarne, Billing park

Thorplands

Huntsmead Road

Sywell

Note: Mary Langley usually meets weekly, depending on availability. Group can't access online.

Easy Eco Tips

FEBRUARY

Go green for Lent. The weeks leading up to Easter are a time for self reflection, repentance, and emulating Jesus' obedience to the Father. Is there something you'd like to give up, or take up during Lent that will enable you to reflect on God, contribute to our planet's wellbeing and enhance others' lives through sustainable, eco friendly living?

MARCH

Celebrate Spring. Immerse yourself in the sights and sounds of the season - breathe in the fragrance of blossoms, observe budding catkins, note different bird songs, spot footprints, or use the Pl@ntNet app to identify spring flowers.

Nature can boost our happiness, so spend time in your garden, on your balcony, and in local green spaces. Dedicate quality time to appreciate creation's beauty, and thank God for the hope that spring can bring with our Lent resources at: arochoa.org.uk/connect-with-gods-creation-over-lent/

APRIL

Fit more active travel into your day and daily routine. Re-evaluate your journeys. Explore walking or cycling options, or modify your route to include some form of active travel, ie. disembark a stop earlier and complete the remaining part of your journey on foot. Indulge in a leisurely stroll, or opt for a bike ride along a cycle friendly route. Consider connecting with your local ramblers or cycling group for shared experiences. Use the extra steps or the changed travel arrangements as a prompt to pray for God's creation, nature's preservation and the reduction in fossil fuel usage.



arochoa.org.uk/wild-christian

Lay Ministry Training

In September 2020, I started my lay ministry training during Lockdown. So all sessions were on Zoom, hence we soon learnt the phrases like; "Your on Mute?"; "is that a legacy hand?" and accessing a "Break out Room" virtually.

When we did eventually meet for the first time at Launde Abbey, it was in June 2021, and many people thought I "looked taller" on Zoom than I did in real life!!

The Course for lay Ministry is for two years with a further one year to become a reader.



Some of the subjects the course covers are introduction to the Bible, Pastoral Care, prayer and spirituality, Evangelism, Chaplaincy, Safeguarding, and learning about yourself and how we work as a team by participating in residential courses. Further study to become a reader includes reading the Old and New Testament, Doctrine, Worship and Sacraments and Conducting Funerals.

It was hard work, I really struggled with some of the modules and content, but I made it in the end, along with 11 others from Cohort 12 and we are very glad that we finished.

It was a real joy to be admitted into the Emmanuel Group at Rectory Farm at the end of October 2023, by Bishop Andrew (see picture), and a pleasure to have the clergy team and Lay leadership team there, along with visitors. Thank you all very much for cards of congratulations, and gifts. One gift I treasure is a painted lighthouse, where people had written messages or scripture verses, this now hangs on my landing. I am now part of the preaching team, and also part of the Hospital Chaplaincy volunteer team, so if there is anyone in hospital who would like a visit let the Clergy team know who will then inform me.



Fiona Potter

Women's Conference on "Redeemed Relationships" at Moulton Parish Church on Saturday 24th February.

Its a lovely, uplifting & encouraging day out Ladies, with bacon butties on arrival & tea & cake throughout the day.

Booking opens 15th January, places are limited.

Cost is £10 per person

Book in one of the following ways: Midlands Gospel Partnership Northampton website, upcoming events -

<https://www.mgpnorthampton.org.uk/>

Email: mgpnwomensconference@gmail.com

When booking, please indicate your morning seminar choice and (optional) afternoon seminar choice. Please also indicate any mobility needs as we are using two other venues 5 minutes walk away for seminars.

Payment in cash on the day

More info: Tel: 07821 107064 email: rachmenon@aol.com

9:15am Doors open

9:45am Welcome & worship in song

Interview

Our redeemed relationship

in Christ, Philemon

Claire Burbidge

Coffee & cake (provided)

11:20am morning seminar

12:45pm Lunch (bring your own)

13:30pm Afternoon seminars (optional)

or free time / bookstall / prayer

Worship in song

Our redeemed relationship

with one another, Philemon

Claire Burbidge

Prayer

4:00pm Depart

The Church will be open all day for prayer

THANK YOU Baptist Birthday Scheme Members

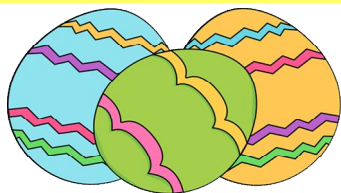
Once again, many thanks to those who have faithfully donated to the BMS (Baptist Missionary Society) through the Birthday Scheme. We sent in a total of £222 during 2023.



As the BMS website says: 'Your birthday can help medics in Chad keep vulnerable mothers and babies safe in childbirth. It can help struggling families in Uganda put food on the table by improving farming techniques and increasing crop yields. It can share the gospel with people who have never heard the good news of Jesus, so that they may find faith in Christ and the fullness of life that only he can bring'.

Sadly this has been my final year as Birthday Scheme Coordinator, thank you again to all who have supported the scheme over a long period of time. I will be handing in all relevant documents to the Church Office so if anyone feels called to become Birthday Scheme Coordinator please enquire there.

Gillian Hill



Café Emm café will be holding an Easter Egg Raffle on Tuesday March 26th at 11.00am in the coffee shop to raise money towards the renovation of the coffee shop toilets.

Can you support them by donating Easter Eggs for the raffle? Please leave donations of eggs at the Emm Cafe office. The Easter Eggs will be some of the raffle prizes. I am also looking for some good quality prizes to go into the draw. Thank you for your support.

Kathy Norris



Plastic Free Home - Zero Waste & Living More Sustainably

13 January at 18:05 · 🌐

- 🚗 Drive less and use public transport more
- 💧 Use less water and take shorter showers
- 💡 Use LED bulbs and turn lights and appliances off
- 🏠 Use heating wisely and turn the dial down
- 🌱 Plant trees and wildlife friendly plants and garden organically
- ♻️ Dispose of our waste and recycle correctly
- ✈️ Fly less
- 🛒 Shop locally, ethically and independently
- 🗑️ Reduce our use of single use plastic
- 👕 Wash clothes on a cold cycle
- ⚡ Switch to green energy
- 🥬 Grow our own food
- 🛍️ Reuse bags
- 🥩 Eat less meat
- 👕 Buy fewer clothes

15

Things we can all do to become plastic free.



We are open 10.00 – 2.00

Monday to Friday.

There is always a warm welcome at Café Emm. We offer good quality, well cooked food, drinks and home-made cakes at very reasonable prices.

We would love to see you and your friends and there is always room to welcome one more....



MORE THAN A CAFE

Café Emm is looking for volunteers to work in the café.

We offer a fun & rewarding environment. Sessions are usually 2 or 4 hours once a week. If you think you might be interested, do come in, speak with one of the staff and have a look around, or email your interest with contact phone number to

coffee.shop@emmanuelgroup.org.uk

Our community café is a charity, doing discrete but important work in supporting people with learning difficulties, dementia, financial difficulties and loneliness.

We are very pleased to have recently received a grant, split over 3 years, from The National Lottery Community Fund. This will help with salaries and utility costs to support this much needed community work at The Emmanuel Group Of Churches, Northampton.

TUESDAYS & THURSDAYS ARE SPECIAL DAYS AT CAFE EMM

We have a special meal deal every
Tuesday and Thursday

A two course lunch £7.70 per person,
Served between 12.00 and 1.45pm
or £6 for a main course only.



We look forward to seeing you!



Bring your
little ones
- there's a
play area
too!

Sunday Lunches are back. These will need to be booked through the café as before.

Monday games sessions need new members. Just come into Café Emm on Mondays at 10.00 and you will be made very welcome. Anna Austin is our Community Support Worker at Café Emm.

The memory café and 'Singing for the Brain' have both re-started. Anna has some exciting new ideas and is busy putting them in place.

office@CafeEmmonmicrosoft.com

Café Emm is not an ordinary café. It is a charity, and most of our staff are volunteers.

We need your support so that we can continue with our work in the community and provide good food at reasonable prices.

If you want to donate by bank transfer the bank details for Café Emm are:

Emmanuel Coffee Shop Sort Code – 60-15-55

Account Number – 73106291

Thank you !

SCAN ME

We have created a new QR code to make it easy to donate.

When you point your phone camera at the pink QR code, it will give you a link to open our Local giving page.

Thank you for your support.

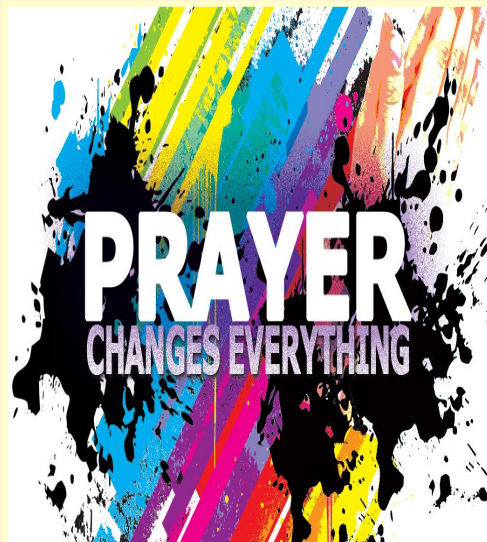


Monday Night Prayer

Every Monday evening at 7.30pm
via zoom, for an hour.

We pray mostly for our local communities and for our churches but also issues from all over the world. Anyone can pray as they feel led, or you can use the time to be quiet, listen and reflect. We find it very encouraging. It is wonderful how much we can feel the Holy Spirit's presence in a zoom meeting

Would you like to join us? Contact the office for the zoom link.



Sadly, February brings with it, the second anniversary of the war in Ukraine

Heavenly Father,

We pray for the Church throughout the world

that we may be a beacon of hope, reminding us all of our responsibility to care for each other and protect your precious gift of creation.

We pray for world leaders, heavenly Father grant them wisdom to make good and just decisions which respect the earth and all that live in it. We pray especially for the poorest and most vulnerable across the world.

We pray for our local community: that we may be good neighbours to each other. May we be blessed as we bless others and demonstrate your love to everyone we meet. And may your name be glorified in all we do.

May God bless you and keep you in the months ahead, as the terrible wars in Ukraine and Gaza continue, and as the cost-of-living crisis and the NHS crisis continues here in the UK.

He alone is our refuge and strength when times remain so tough. May we continue to live our lives for Him, in the grace which He alone can provide.

Prayer for Environmental Awareness

Heavenly Father, we ask you to stir our hearts into action. As global temperatures increase, inspire us with ways we can make a difference in our homes, church congregations, communities, and influence the world around us.

We pray for those people who are already facing the effects - droughts, floods storms and devastating wild fires; that you may grant us strength and hope for the future as we work to adapt to the changing climate.

Give thanks for Northampton Street Pastors,

pray for protection for the patrols out on Saturday nights and give thanks for the Prayer Pastors who support them in prayer so faithfully.

We thank you for all of our clergy and leaders.

Help them to be strong in their vocation. Keep them from harm. May they find great joy in their ministry together. Thank you for blessing our church family with their leadership.

Schoolswork

Pray for our schools, the staff and the children. Give thanks for our growing relationship with a number of local schools and the requests for our clergy to lead assemblies.

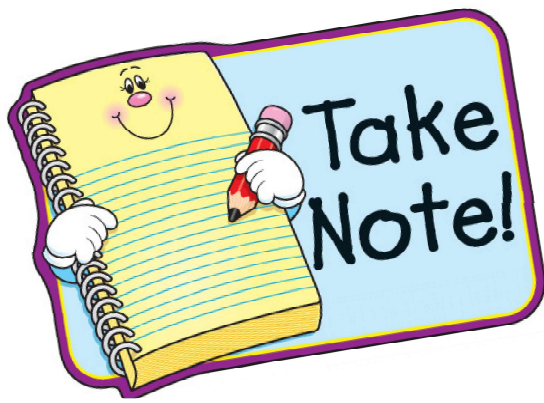
Prayer for the Peace of the World

We know that you weep with us when we think and pray about the wars, destruction, unrest and unkindness that takes place in so many places around your beautiful world. We pray you will place in the hearts of all, the true love of peace and guide, with your pure and peaceful wisdom, the leaders of the nations of the earth. That your kingdom may go forward in peace, until the earth is filled with the knowledge of your love. We pray in Jesus' name.

Foodbank

Give thanks for the work of the Foodbank, the volunteers and community services. We thank you for the opportunities you give us to make good relationships with local people.

Amen



Reflective Mornings

are held at the Methodist Chapel

In Great Billing

On the first Tuesday of the month

10.30 - 12 noon

Coffee and Tea at 10.15am



Coffee Morning

Every Thursday at Blackthorn
(NN3 8QH)

No need to book, just turn up.
Come for a free hot or cold drink.
Meet and chat to other people.

Ring 01604 411166 for more info. Or Find us on
Facebook at Growing Together Northampton



Book Club

Book club.



Are you passionate about literature, eager to explore new worlds and engage in captivating discussions?

Look no further, 5 of us have been meeting together once a month, following on from a conference that re-awakened our hunger to read more. This was experimental to see how it would work, we are thrilled to say that this has been a place and time to come together to embark on literary journeys, share our thoughts and connect over the written word and hospitality.

With a diverse selection of genres, thought-provoking reads and stimulating discussion we have felt enriched, inspired, and eager for more.

If you would like to know more on how to go about getting a group of up to 5 started, we can help you with this.

Every Blessing Yvonne,

Contact Emmanuel office for more info. |

United African Association

United African Association provide advice, support, advocacy for and represent the African community. The group promote community cohesion through events, projects and activities that showcase African culture and heritage. Including African drumming, a food bank providing culturally appropriate foods, 1:1 support, signposting to other organisations, befriending services, ladies swimming and much more.

For more information about United African Association or to get involved in any of our activities or projects, we look forward to hearing from you!

Visit us:

Barratt House, Unit F5B, Kingsthorpe Rd, Northampton NN2 6EZ

email us: uafricanassociation@gmail.com

Call us: 07932 519532 / 07508 417140



Grow, Cook and Eat with

US

Bellinge Community House

Fieldmill Square, Fieldmill Road, Bellinge.

NN3 9AQ

10am-12.30pm every Tuesday

Come join Gem who will be cooking healthy delights, whilst Lynne will be clearing and gardening outside.

We will then join to eat lunch together.

For more information call Gem 07812508711



The Ministry Team

Revd Rachael Warnock 402 150 rachael.warnock@emmanuelgroup.org.uk
 Revd Yvonne Desroches 402 150 yvonne.desroches@emmanuelgroup.org.uk
 Revd Stewart Betts 402 150 rector@emmanuelgroup.org.uk
 Revd Chris Pearson 402 150 c.pearson1@homecall.co.uk
 Precious Luke 402 150 precious.luke@emmanuelgroup.org.uk

Emmanuel Group Office - 01604 402150

Church Office open Mon 10am – 1pm & Tue – Fri 10am – 2pm

Administrator - Linda Withers Linda.withers@emmanuelgroup.org.uk

Please Note: emails are not normally checked outside of these hours

Café Emm Manager - Lucy Sone 402150 (church office)

Community Support Worker - Anna.Austin@CafeEmm.onmicrosoft.com

Community Worker - gemma.broadhead@emmanuelgroup.org.uk

Community Worker - lynne.nelson@emmanuelgroup.org.uk

Website team - Paul Foster, Rachael Warnock, Richard Seaby

B.E.R.T Editor Liz Bateman liz@lizzywhizz.biz

EMMANUEL GROUP of CHURCHES

Billing Brook Road

NORTHAMPTON NN3 8JR

RECTORY FARM COMMUNITY CHURCH

Rectory Farm Community Centre
 Olden Road
 NN3 5DD

Sunday service at 3.45pm (see back page)

BOOTHVILLE COMMUNITY CHURCH

Boothville Community Hall
 Booth Lane North
 (access via the lane by the hairdressers)

Sunday service at 10.30 (see back page)

EMMANUEL CHURCH

Weston Favell Centre,
 Billing Brook Road

Sunday service at 10.30 (see back page)

Weds Communion at 11.30 am

Emmanuel Group Office - Mon - Fri 10 - 2

Café Emm (coffee shop) - Mon - Fri 10- 2

Financially, these are tough times for everyone. Churches and Charities are not exempt from the struggle. If you usually give financially to the Emmanuel Group we thank you for helping us to continue our work in our local communities and schools. Please keep giving as generously as you are able.

If you would like to give regularly, you can do this via bank transfer:

Emmanuel Group of Churches NATWEST Sort Code: 60-15-55 Bank Account Number: 72882948

If you prefer to give another way, you can give online via:

<https://localgiving.org/charity/emmanuelgroup/>

which has the option for single or regular gifts.

Similarly, the Foodbank: <https://localgiving.org/charity/weston-favell-centre-foodbank/>

Thank you

for helping us continue our work in our local communities



SERVICES FEBRUARY 2024

1. Sun day	Emmanuel @ 10.30	Boothville CC @ 10.30	Rectory Farm CC @ 15.45	Midweek Communion 11.30am	MID - WEEK C O M M U N I O N @ <u>EMMANUEL OFFICE</u> TOP FLOOR NEXT TO CAFÉ EMM UNTIL FURTHER NOTICE
4th	Communion "All together" Stewart Betts	Morning Worship Maureen Luke	Rachael Warnock	Weds 7th Stewart Betts	
11th	Morning Worship Precious Luke	Communion Stewart Betts	Communion Kris Hatherly & Obi Hez	Weds 14th Yvonne Desroches	
14th 7.30pm	Communion Stewart Betts & Yvonne Desroches		Fiona Potter		
18th	Communion Yvonne Desroches	Morning Worship Rachael Warnock	Fiona Potter	Weds 21st Kris Hatherly	
25th	Morning Worship Rachel Warnock	Communion Chris Pearson	Communion Yvonne Desroches	Weds 28th Chris Pearson	

SERVICES IN MARCH 2024

Sunday	Emmanuel 10.30	Boothville 10.30	Rectory Farm CC @ 15.45	Midweek Communion 11.30am	MID - WEEK C O M M U N I O N @ <u>EMMANUEL OFFICE</u> TOP FLOOR NEXT TO CAFÉ EMM UNTIL FURTHER NOTICE
3rd	Communion + Baptism Rachael Warnock	Morning Worship Precious Luke	Afternoon Worship Fiona Potter	Weds 6th Kris Hatherly	
10th	Café Church 'All together' Service Rachael Warnock	Communion Yvonne Desroches	Communion Obi Hez Kris Hatherly	Weds 13th Stewart Betts	
17th	Communion Stewart Betts	Morning Worship Peter Goodlad	Afternoon Worship Keith Holland Delamare	Weds 20th Yvonne Desroches	
24th PALM SUNDAY	Morning Worship Rachael Warnock	Communion Chris Pearson	Communion Yvonne Desroches & Stewart Betts	Weds 27th Stewart Betts	
28th MAUNDY THURSDAY	7.30pm Communion Fiona Potter & Yvonne Desroches				
29th GOOD FRIDAY	10.30am Rachael Warnock	2pm Stewart Betts	RF CLOSED		CAFÉ EMM UNTIL FURTHER NOTICE
31st EASTER SUNDAY	Communion Rachael Warnock	Communion Stewart Betts	RF CLOSED		

please visit our website for more information
www.emmgroupp.org.uk